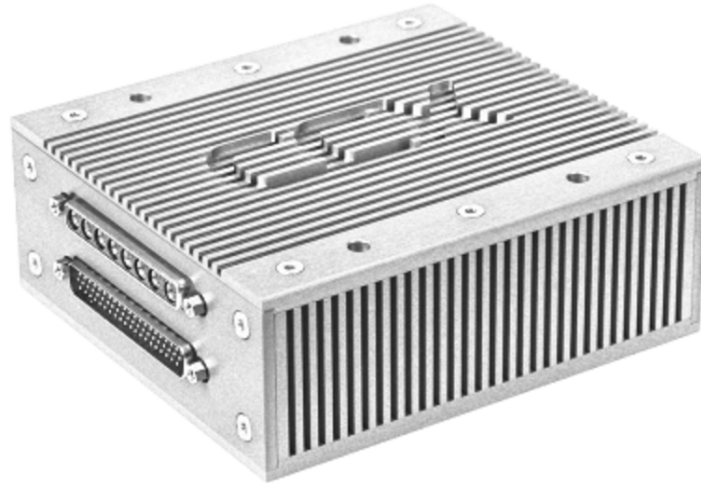


AP-250

Cybersecurity Appliance and Cabin Router

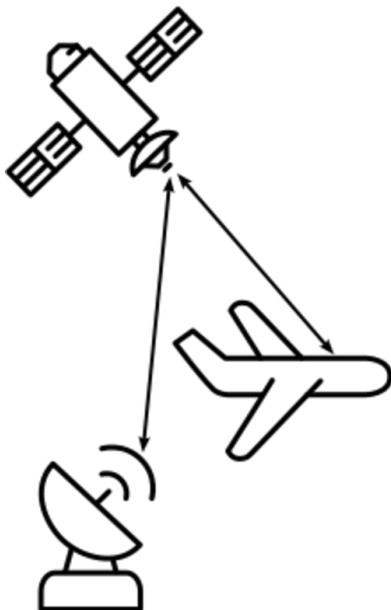


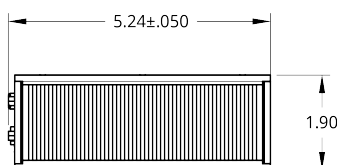
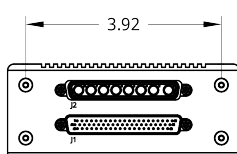
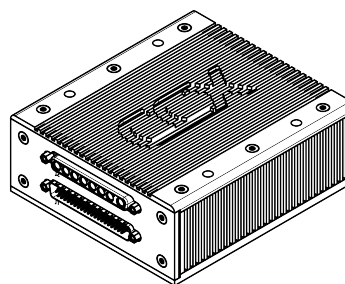
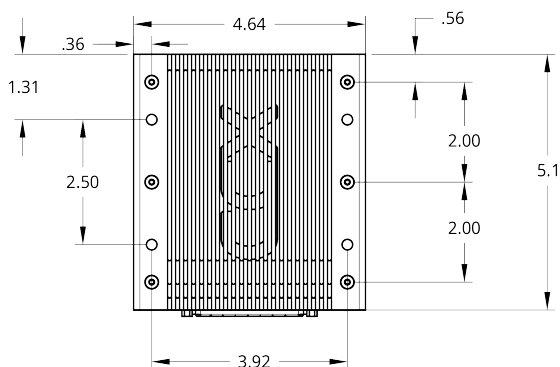
Improve the cybersecurity posture and cabin network connectivity onboard your platforms with the AP-250 Cybersecurity Appliance and Cabin Router. The AP-250 can serve as an Intrusion Detection System (IDS), a secure applications server, and an advanced cabin router. It boasts a 1TB solid-state drive, capable of storing large quantities of data.

This appliance adds security to the network with end-to-end data encryption, network and local firewalls, encrypted data-at-rest, and Secure Boot. CCX Technologies' advanced platform IDS is capable of monitoring databus, log, and IP network traffic for potential cyber vulnerabilities.

Features

- Lightweight and compact
- Configurable Policy-Based Routing (PBR) engine
- Multi-WAN support (support multiple SATCOM systems)
- Secure VoIP calling
- Device management tools
- Configurable IDS
- Zeek and SNORT network monitoring frameworks
- End-to-end data encryptions
- Advanced local/network firewalls
- Secure Boot/encrypted data-at-rest
- Compatibility with many databus standards (including ARINC 429, MIL-STD-1553, and CANBUS)
- Common data formatting/data fusion
- 1 TB solid-state drive for data storage
- Secure applications server
- Platform configuration management





Technical Information

Dimensions	5.18"L x 4.64"W x 1.90"H
Weight	2.4lb
Mounting Provisions	4 mounting holes for #8 bolts or screws; flange mount. Option to install in 2 or 4 MCU form factor with an IK-350
Connectors	MIL-DTL-24308G 62-pin Male HD D-sub MIL-DTL-24308G 8W8 Coax Female D-sub
Operating Voltage	28VDC or 12VDC
Typical Power Consumption	12W
Maximum Power Consumption	18W
WiFi	IEEE802.11ac/n/a/b (WiFi 5), 2.4GHz/5GHz, 3x3 MuMIMO radios with radio enable discrete input
Mobile Broadband	LTE bands
Supported Antennas	CCX Technologies IK-201 (LTE) and IK-200 (WiFi)
Ethernet	10/100/1000 BASE-T IEEE 802.3 Compliant Ethernet Ports with: ACS, Automatic MDI/MDIX crossover, Automatic polarity correction, and IEEE 802.3u compliant auto negotiation
Discrete GPIO	ARINC-628 GND/Open and High/Low Sensing Discrete Inputs/Outputs
Data Storage	1TB NVMe
Environmental Qualifications	RTCA DO-160G


Interfaces

QTY	Interfaces	Standards
4	Ethernet	1000/100/10BASE-T (IEEE 802.3ab/u/i)
2	WiFi	IEEE 802.11ac/n/b/a (2.4 GHz/5GHz)
1	Cellular	4G/3G
3	Radio Disable Discrete Inputs	ARINC-628
4	Bidirectional Discretes	ARINC-628
6	Power	12V and 28V DC

Contact us:

 ccxtechnologies.com

 info@ccxtechnologies.com

 +1 (613) 695-9434

Powered
by

